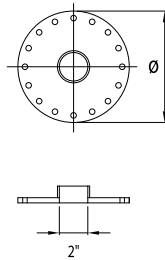
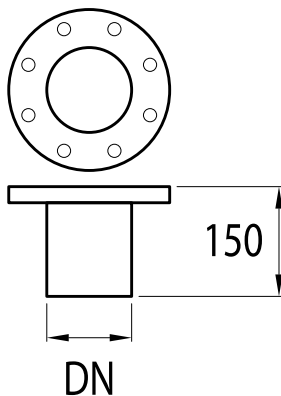


Inspection hatch with gasket and bolts							
Ø	C	F	Hole	AISI 316L Inox		Painted	
				Code	€	Code	€
180	120	150	8 M10/12	BCP 18 X	-	BCP 18 VN	-
240	170	210	12 M12	BCP 24 X	-	BCP 24 VN	-
290	200	260	12 M12	BCP 29 X	-	BCP 29 VN	-
380	300	344	19 Ø14	BCP 38 X	-	BCP 38 VN	-
430	350	396	22 Ø14	BCP 43 X	-	BCP 43 VN	-
480	400	444	26 Ø14	BCP 48 X	-	BCP 48 VN	-
620	520	568	24 Ø18	BCP 62 X	-	BCP 62 VN	-



Flange with adapter for electrical resistance							
Ø	N° of Holes	AISI 316L Inox		enamelled		Keramtech	
		Code	€	Code	€	Code	€
180	8	CRI 180	-	CRV 180	-	-	-
290	12	CRI 290	-	CRV 290	-	-	-
380	19	CRI 380	-	CRV 380	-	CRK 380	-
430	22	CRI 430	-	CRV 430	-	CRK 430	-
480	26	-	-	-	-	CRK 480	-



Flanged connections UNI EN 1092-1 (ex UNI 2278)						
DN	AISI 316L Inox		Galvanized		Painted	
	Code	€	Code	€	Code	€
32	DN 32 X	-	DN 32 Z	-	DN 32 V	-
40	DN 40 X	-	DN 40 Z	-	DN 40 V	-
50	DN 50 X	-	DN 50 Z	-	DN 50 V	-
65	DN 65 X	-	DN 65 Z	-	DN 65 V	-
80	DN 80 X	-	DN 80 Z	-	DN 80 V	-
100	DN 100 X	-	DN 100 Z	-	DN 100 V	-
125	DN 125 X	-	DN 125 Z	-	DN 125 V	-
150	DN 150 X	-	DN 150 Z	-	DN 150 V	-
200	DN 200 X	-	DN 200 Z	-	DN 200 V	-
250	DN 250 X	-	DN 250 Z	-	DN 250 V	-
300	DN 300 X	-	DN 300 Z	-	DN 300 V	-